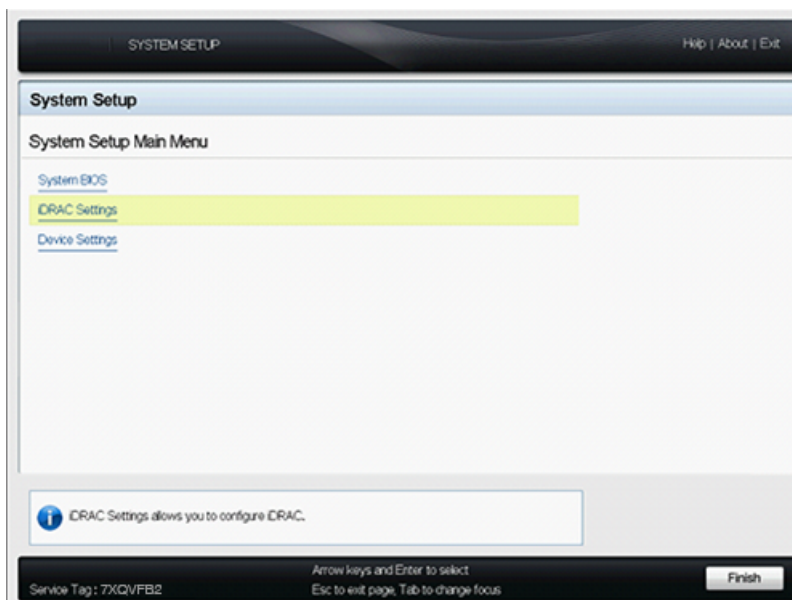


# Configure the iDRAC IP address with a monitor, keyboard, and mouse

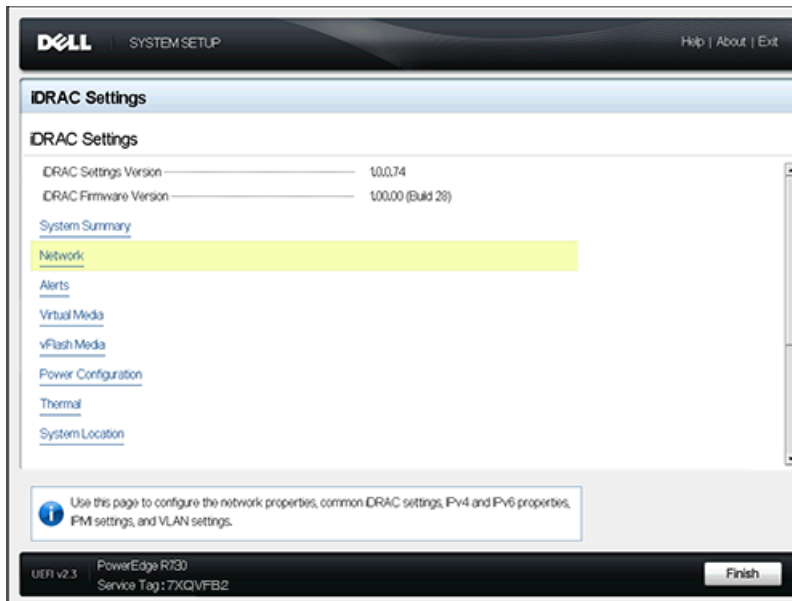
Published: 2020-02-22

Remote access to the ExtraHop appliance is available through the Integrated Dell Remote Access Controller (iDRAC). In environments where DHCP is not available, an IP address can be assigned to the iDRAC either through the front panel controls or by attaching a monitor, keyboard, and optional mouse to the appliance and then making changes through the System Setup utility. After the IP address is configured, additional configurations can be made through the iDRAC web administration interface.

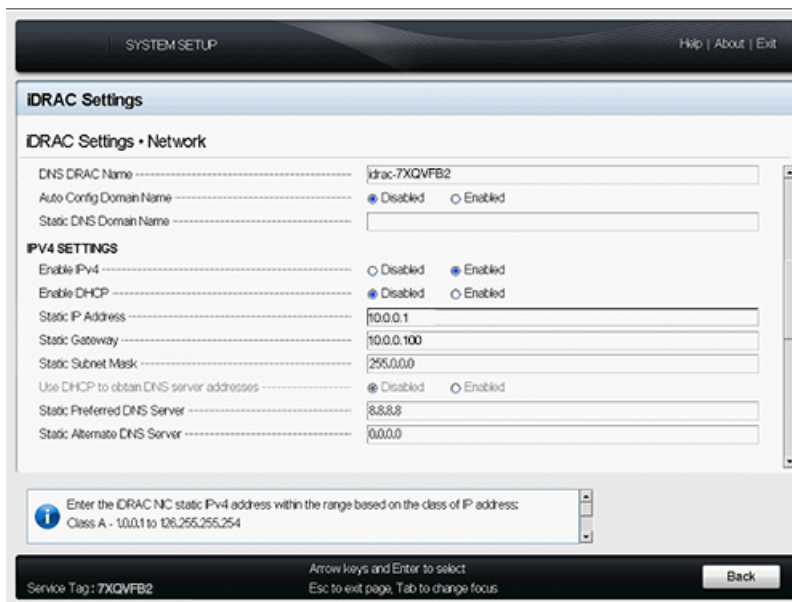
- To configure the iDRAC IP address through the front panel controls and configure additional iDRAC settings, see [Configure the iDRAC Remote Access Console](#).
  - For more information about the iDRAC, see the Integrated Dell Remote Access Controller documentation at <http://dell.com/support/manuals>.
1. If the appliance is powered on, power it off.
  2. Plug an Ethernet cable into the labeled iDRAC port on the back of the appliance, and plug the other end of the cable into the LAN switch on the network.
  3. Attach a monitor to the VGA port on the appliance.
  4. Attach a keyboard to a USB port on the appliance.
  5. Optional: Attach a mouse to a USB port on the appliance.
  6. Press the appliance power button.
  7. When the monitor displays the system BIOS screen, press F2 to select **System Settings**.
  8. From the menu, select **iDRAC Settings**.



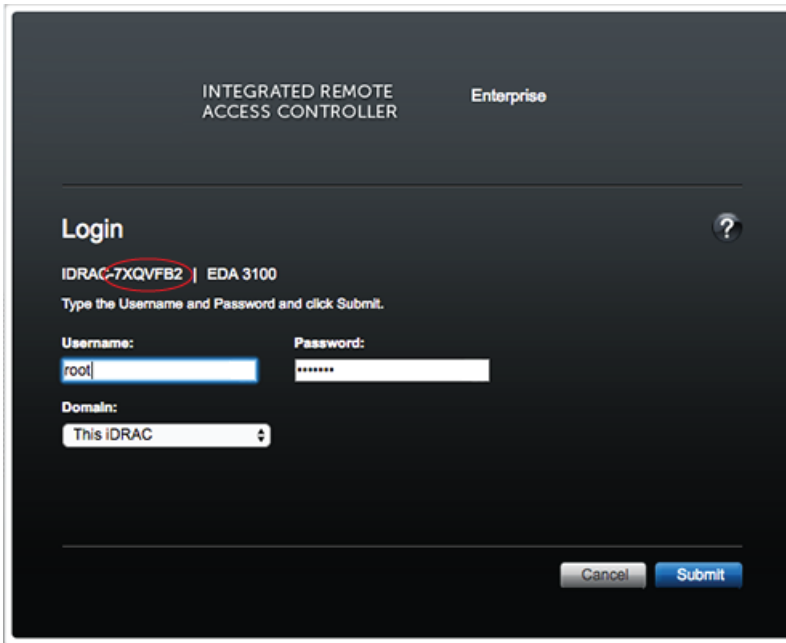
9. On the iDRAC Settings screen, press the arrow key or mouse button to select **Network**.



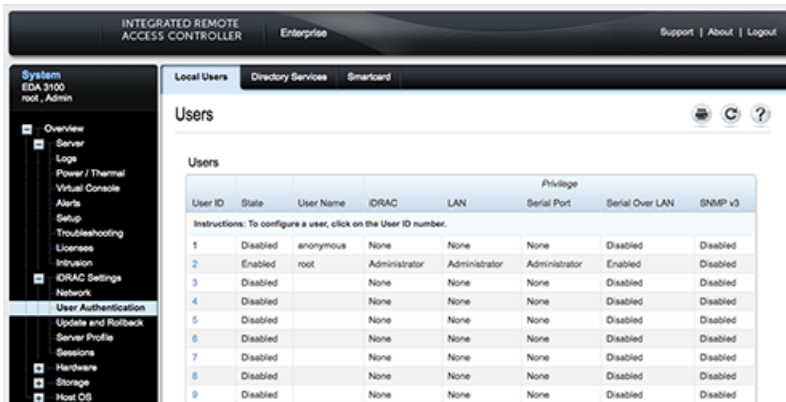
10. Scroll down to IPV4 Settings, and complete the following fields:
  - a) **Static IP Address**
  - b) **Static Gateway**
  - c) **Static Subnet Mask**



11. Optional: Type the IP addresses for the **Static Preferred DNS Server** and the **Static Alternate DNS Server**. Setting up DNS enables the iDRAC to access network resources with DNS names instead of IP addresses. If you do not have a DNS server, go to step 12.
12. After you complete the changes to the iDRAC configuration, press the ESC key to display the Exit menu.
13. Select **Save Changes and Exit** and then press the ENTER key to retain your changes.
14. In a web browser, type the iDRAC IP address and log in with the username **root** and the password, which is the service tag number listed on the login screen or on the pull-out tag at the front of the appliance. The password is case-sensitive.



15. Click **Submit**.
16. Optional: Change the root user password in the **iDRAC Settings > User Authentication** section.



You can now access the iDRAC web interface from any web browser through the assigned IP address.