

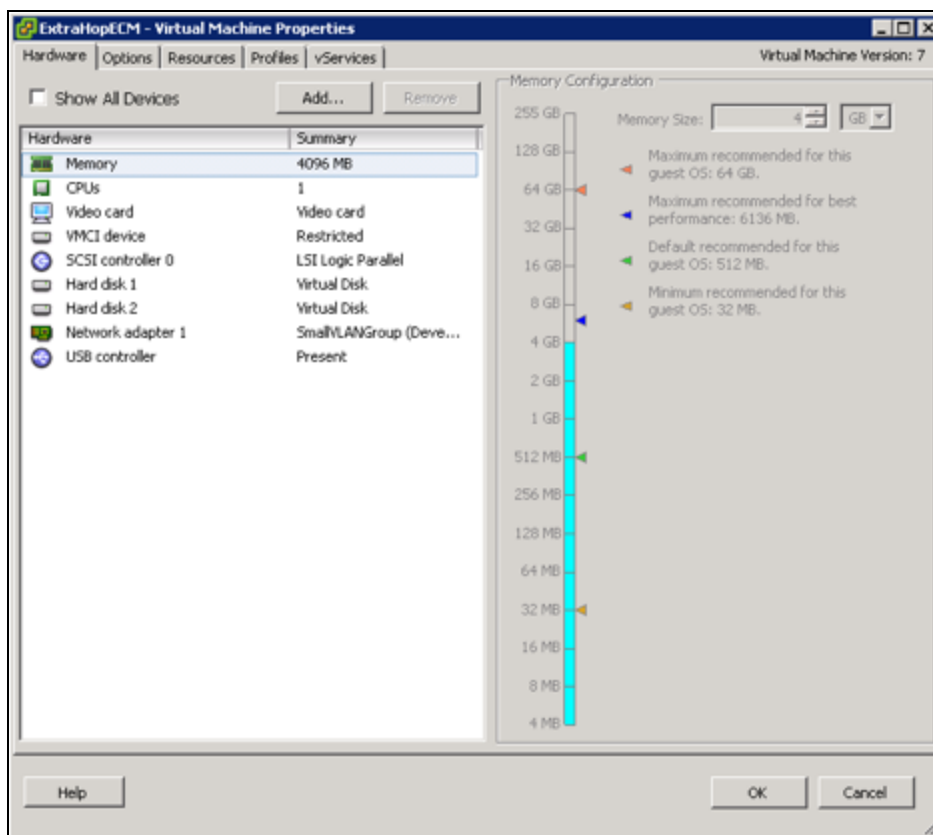
# Set Up Multiple Management Interfaces on Virtual Appliances

After installing an ExtraHop virtual appliance, it is possible to add a second management interface. This guide describes how to use the vSphere ESX configuration tool to add a second management interface the following ExtraHop virtual appliances:

- EH1000v
- EH2000v
- ExtraHop Central Manager (ECM)

To add a second management interface:

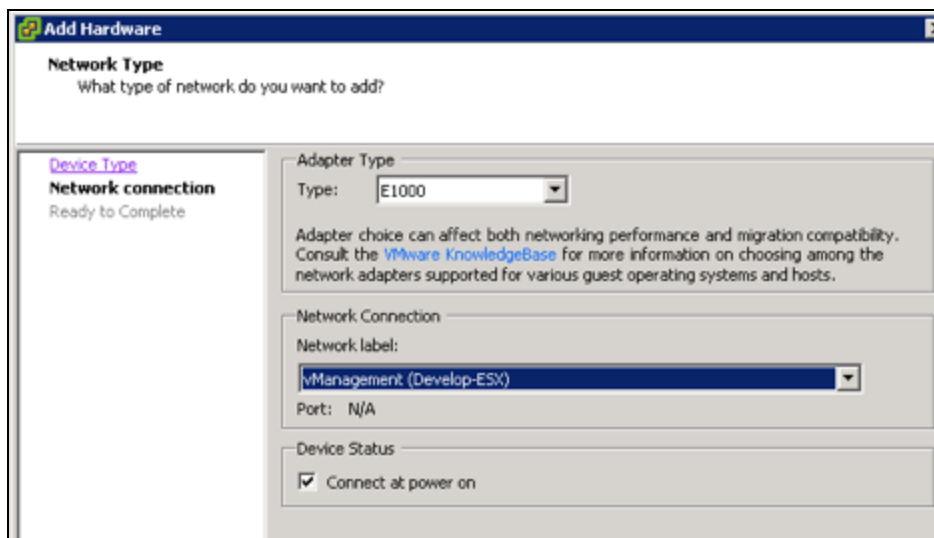
1. Modify the appliance's NIC settings to include a second management NIC.
  - a. In vSphere, open the **Settings** panel for the virtual appliance.
  - b. Press the **Add** button.



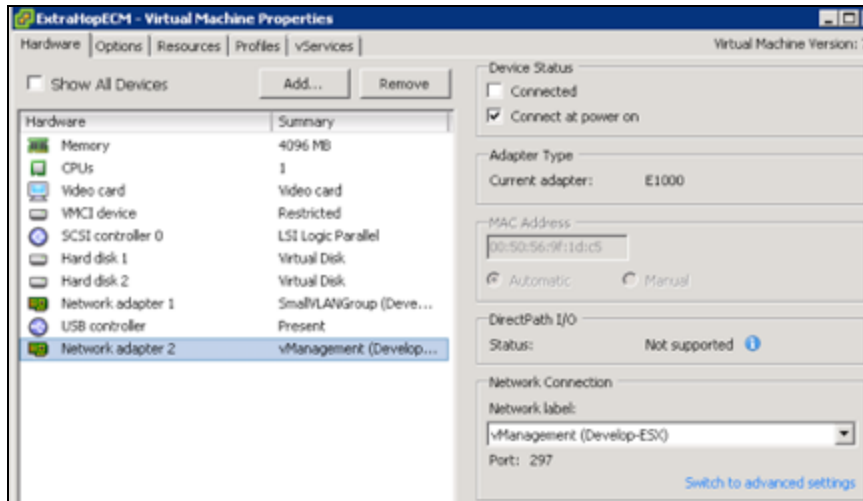
- c. Select **Ethernet Adapter**.



- d. Click the **Type** drop-down list and select **E1000**.
- e. Click the **Network Label** drop-down list and select the network connection for the NIC to use.



- f. Verify the settings. (The network adapter is connected after the ExtraHop virtual appliance is restarted in a later step.)



2. Modify the Running Config on the ExtraHop virtual appliance.
  - a. In the ExtraHop Admin UI, click **Running Config** and click **Edit**.
  - b. Add the following IP list configuration below the gateway in the net section:

```

"net": {
  "dhcp": false,
  "netmask": "255.255.255.0",
  "ipaddr": "192.168.120.10",
  "gateway": "192.168.120.2",
  "iplist": [
    {
      "netmask": "255.255.0.0",
      "ipaddr": "10.10.205.212",
      "gateway": "10.10.1.255"
    }
  ]
},

```

- c. When you click **Update**, the system attempts to reconnect to your IP address.
3. Restart the virtual appliance in the ExtraHop Admin UI.
  - a. Log in to the ExtraHop Admin UI, go to the **System Settings** section, and click **Shutdown/Restart**.

System Settings	
Services	<a href="#">Change</a>
Firmware	<a href="#">Change</a>
System Time	<a href="#">Change</a>
Shutdown/Restart	<a href="#">Change</a>
License	<a href="#">Change</a>
Disk	<a href="#">Change</a>

b. In the **System** section, click **Shutdown**.

System	
Start Time	04:33
	<a href="#">Restart</a>
	<a href="#">Shutdown</a>

If you reach an error page after performing these steps, redirect your browser to the ExtraHop Admin UI to confirm the new management interface is present.