

Add a CPU Core to the EH1000v with VMware

This guide explains how to add a CPU core to the EH1000v with VMware for the purpose of using SSL decryption. You must have a valid license from ExtraHop to use SSL decryption.

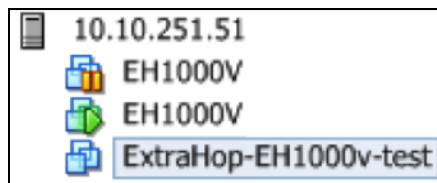
1. In the Admin UI, go to the **System Settings** section and click **Shutdown/Restart**.

System Settings	
Services	Change
Firmware	Change
System Time	Change
Shutdown/Restart	Change
License	Change
Disk	Change

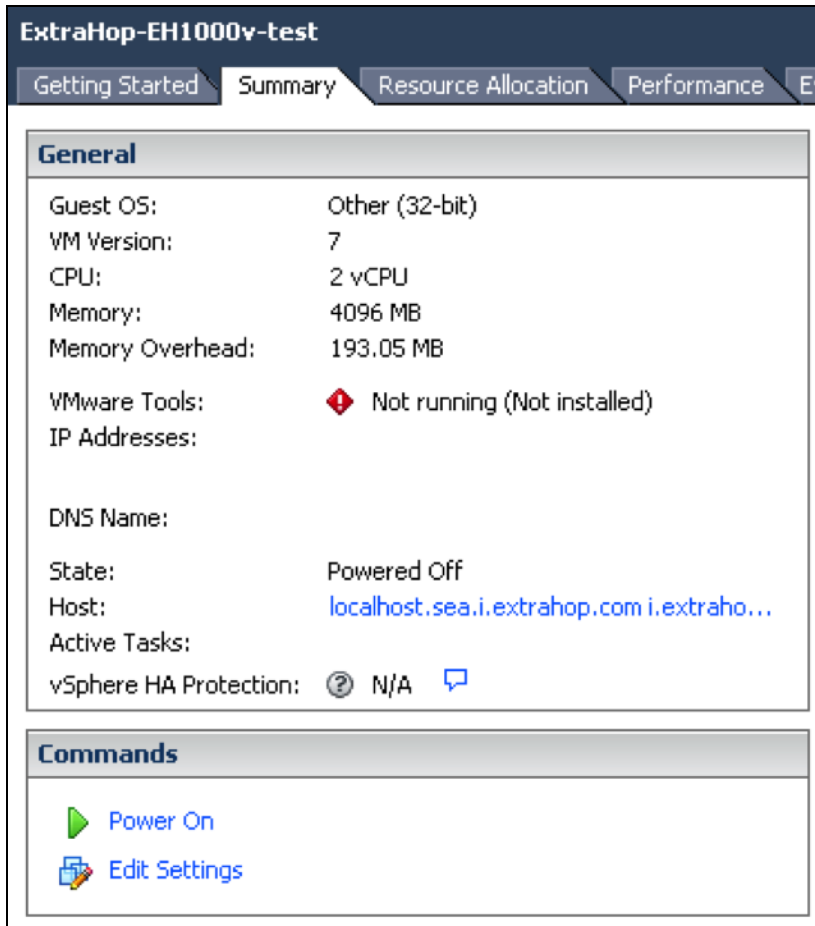
2. Under **System**, click **Shutdown**.

System	
Start Time	Nov19
	Restart
	Shutdown




3. Log in to the VMware vSphere client.
4. In the left panel, select the VM.



5. Click the **Summary** tab and then click **Edit Settings**.



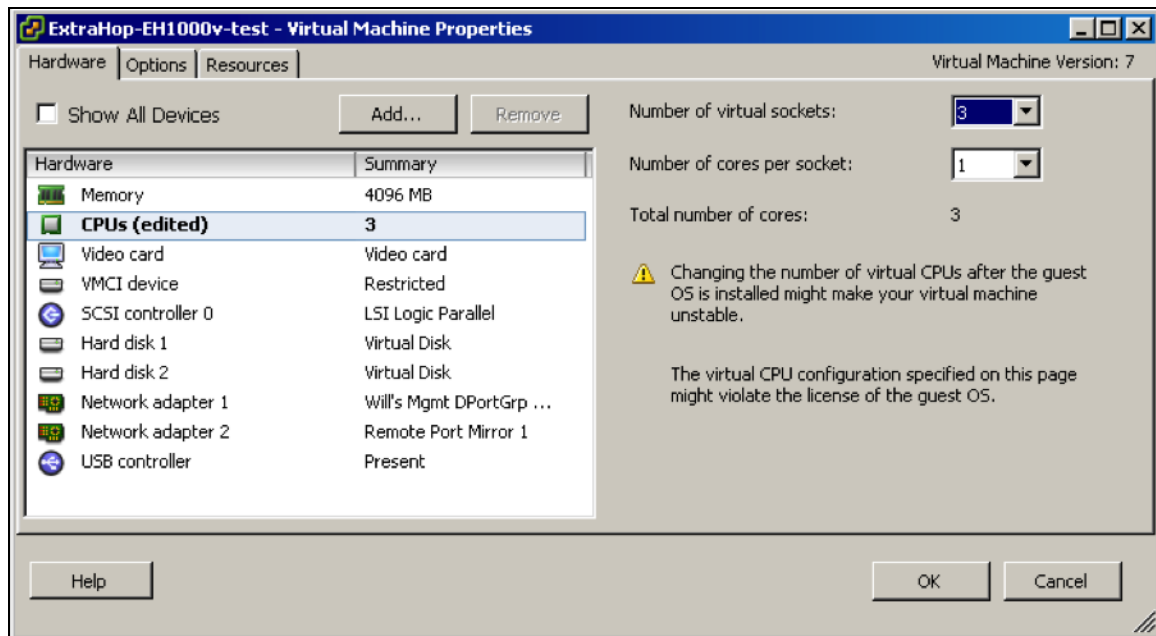
The screenshot shows the 'Summary' tab for a virtual machine named 'ExtraHop-EH1000v-test'. The interface includes a navigation bar with tabs for 'Getting Started', 'Summary', 'Resource Allocation', 'Performance', and 'Ev'. Below the navigation bar is a 'General' section containing the following information:

Guest OS:	Other (32-bit)
VM Version:	7
CPU:	2 vCPU
Memory:	4096 MB
Memory Overhead:	193.05 MB
VMware Tools:	 Not running (Not installed)
IP Addresses:	
DNS Name:	
State:	Powered Off
Host:	localhost.sea.i.extrahop.com i.extraho...
Active Tasks:	
vSphere HA Protection:	 N/A 

Below the 'General' section is a 'Commands' section with two buttons: 'Power On' (with a green play button icon) and 'Edit Settings' (with a pencil and document icon).

6. In the **Virtual Machine Properties** pop-up window, click **CPUs**.

- Click the **Number of virtual sockets** drop-down list and select **3**.



- Click **OK**.
- On the **Summary** tab, under **Commands**, click **Power On**.

