

Configure RAID10 on the EH8000

The ExtraHop system builds RAID0 with four drives installed by default. On the EH8000, users can install another four drives provided by ExtraHop to enable RAID10 configuration. This guide explains how to upgrade the EH8000 to use RAID10 functionality.

Write access to the ExtraHop Administration UI is required to complete this procedure. This guide assumes you have a copy of the ExtraHop Rescue CD image. For assistance with using the ExtraHop Rescue CD, contact ExtraHop Support.

Drive Statuses:

- Green: The disk is online and functioning properly.
- Yellow: The disk is not configured.
- Red: The disk has failed or been removed.

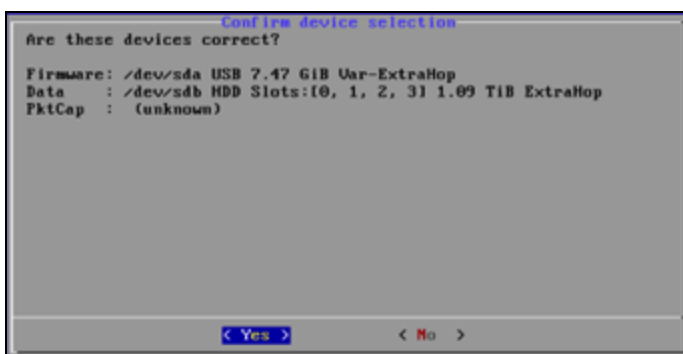
RAID States:

- Optimal: RAID10 is configured.
- Not Optimal
- Recoverable: The hardware is functioning but not configured.
- Not recoverable: The hardware is not functioning.

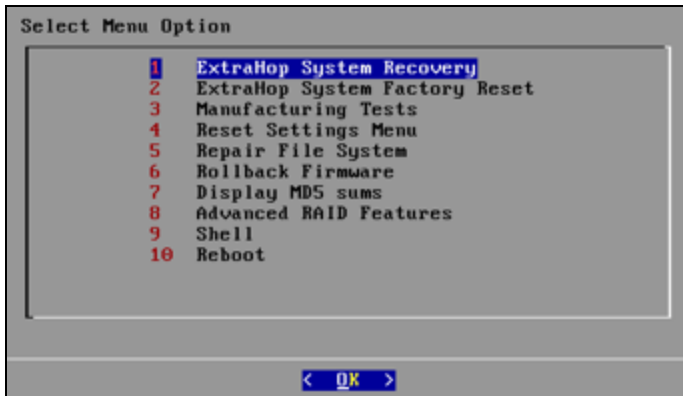
Enabling RAID10 Configuration

To enable RAID10 configuration :

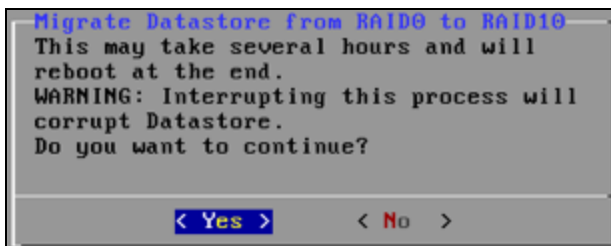
1. Insert the ExtraHop Rescue CD that you received from ExtraHop Support.
2. Insert the four disks from ExtraHop into slots 4 through 7.
3. Restart the ExtraHop system.
4. If your system is using the default settings, go to the next step. If your system is not using the default settings, the **Confirm device selection** screen appears. Select **Yes**.



5. The **Select Menu Option** screen appears with a menu containing multiple recovery options.



6. Select **Advanced RAID Features**.
7. Click **Yes** to migrate to RAID10.

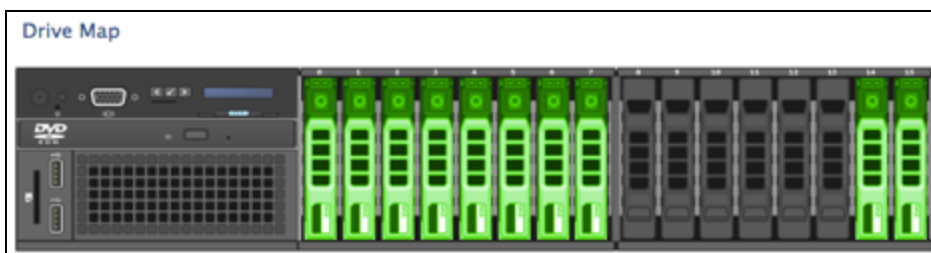


Once you have finished the migration process, go to the Admin UI to check the disk states and configure alerts and notifications.

Checking the RAID10 Configuration in the Admin UI

To check the RAID10 configuration in the Admin UI:

1. Log in to the Admin UI with your user name and password.
2. Go to **System Settings** and click **Disk**.
3. View the Drive Map and confirm the RAID status is **Optimal**.



If the disks on the Drive Map are not all green and the RAID status is not optimal, refer to ExtraHop Guide: Repairing a Degraded RAID10 Configuration on the EH8000.

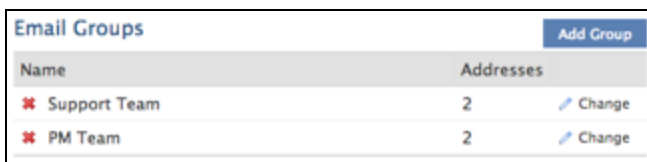
Configuring Notifications in the Admin UI

To configure failed disk notifications in the Admin UI:

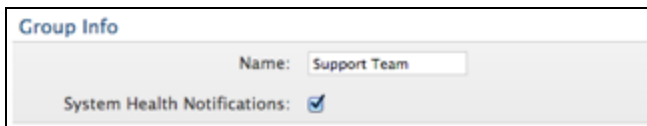
1. Log in to the Admin UI with your user name and password.
2. Go to the **Network Settings** section and click **Notifications**.
3. Click **Email Notification Groups**.



4. On the **Email Groups** page, click the **Change** icon next to the email group that you want to update.



5. On the **Group Info** page, select the **System Health Notifications** checkbox to send system storage alerts to the email group. These alerts will fire when the physical disk is in a degraded state.



For more information about sending email notifications, refer to the *Notifications* section of the *Admin UI Help*.