

Add a CPU Core to the EH1000v with Hyper-V

This guide explains how to add a CPU core to the EH1000v with Hyper-V for the purpose of using SSL decryption. You must have a valid license from ExtraHop to use SSL decryption.

1. In the Admin UI, go to the **System Settings** section and click **Shutdown/Restart**.

System Settings	
Services	Change
Firmware	Change
System Time	Change
Shutdown/Restart	Change
License	Change
Disk	Change





2. Under **System**, click **Shutdown**.

System	
Start Time	Nov19
	Restart
	Shutdown

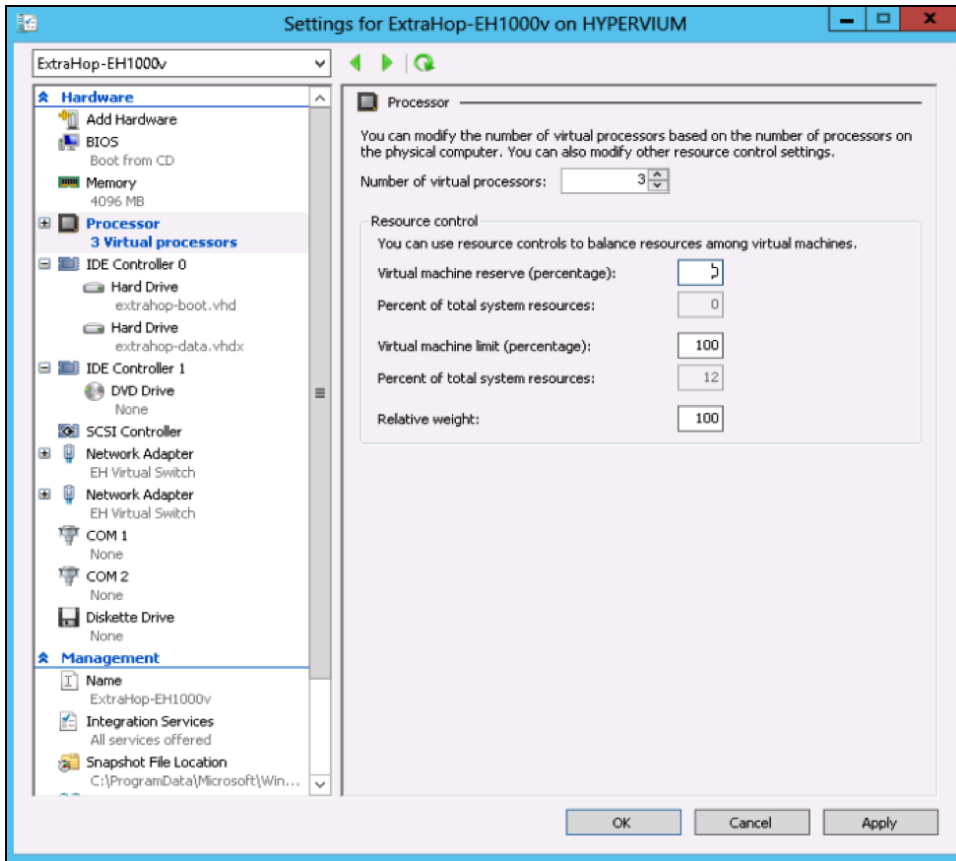
3. Open the Hyper-V Manager.
4. In the Virtual Machines list, select the VM.

Virtual Machines			
Name	State	CPU Usage	Assigned Memory
	Running	0 %	4096 MB
	Off		
	Running	0 %	4096 MB
	Off		
ExtraHop-EH1000v	Off		
	Off		
	Off		
	Running	0 %	8192 MB
	Running	0 %	8192 MB

5. In the right panel, under the VM name, click **Settings**.

ExtraHop-EH1000v	
	Connect...
	Settings...
	Start
	Snapshot

6. In the **Settings** pop-up window, click **Processor**.
7. Click the **Number of virtual processors** drop-down list and select **3**.



8. Click **Apply** and then click **OK**.
9. In the right panel, under the VM name, click **Start**.

